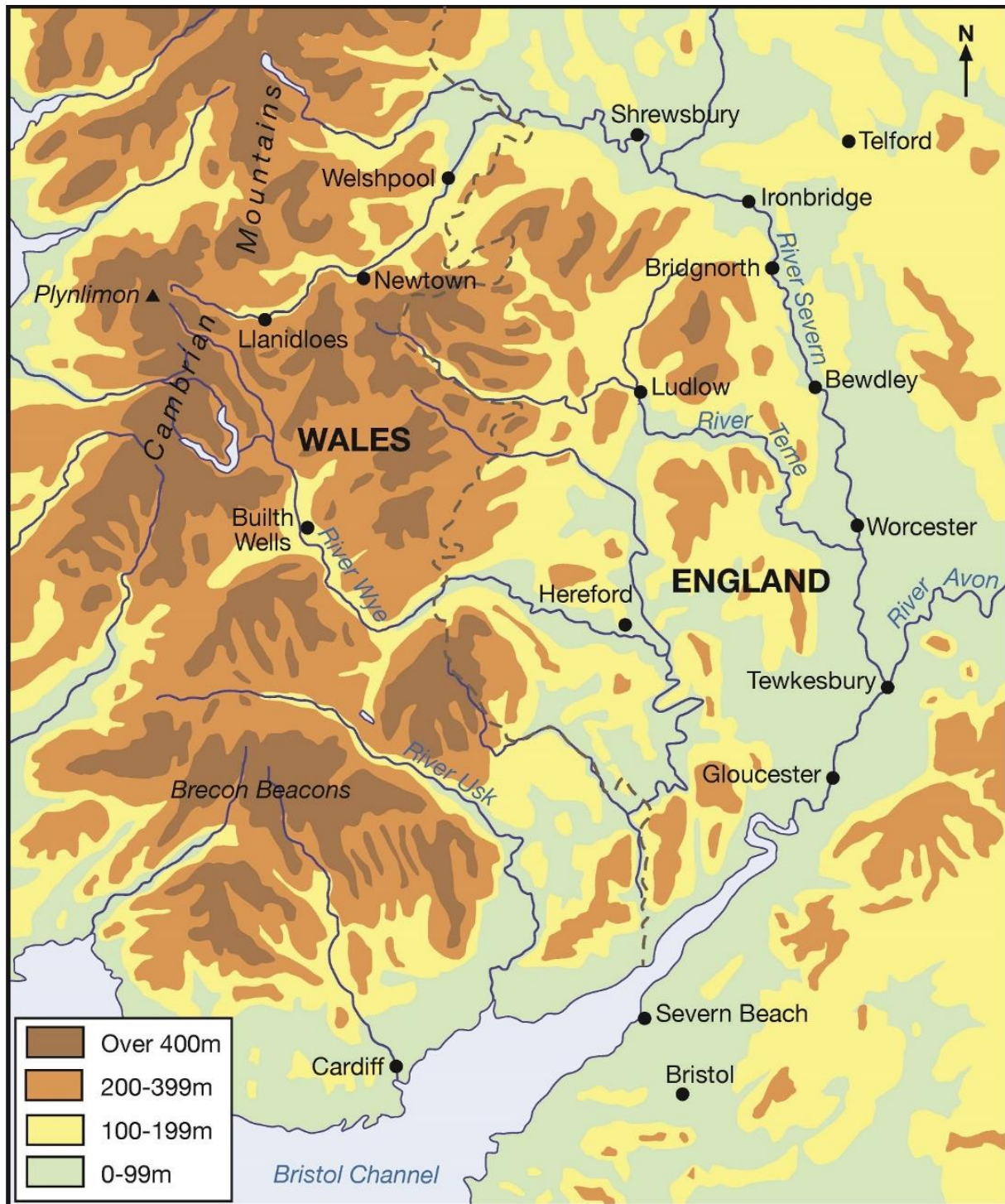


## 2. Describing the course of the River Severn



Study the map which shows the course of the River Severn before doing the activities on the next page. The key to using this map is to remember that water flows downhill because of the force of gravity.

## Activities

1. Use the map of the River Severn to complete the following sentences by underlining the correct words from the ones given in *blue italics*.

The River Severn has its source *in England / in the Bristol Channel / on Plynlimon*.

The source is *over 400m / between 200-399m / between 0-99m* above sea level.

The River Severn flows through Wales in a mainly *westerly / north-easterly / southerly* direction.

The River Severn crosses the border from Wales to England about *8 / 18 / 38 km* west of Shrewsbury.

After Ironbridge the River Severn flows in a mainly *northerly / easterly / southerly* direction.

Between Worcester and Gloucester the River Severn is joined by two main tributaries. These are the *River Usk / River Teme / River Wye / River Avon*.

After flowing through *Cardiff / Gloucester / Bristol* the River Severn flows into the Bristol Channel.

2. The River Wye is another major river that flows through Wales. Use the map to describe the course of the River Wye.

---

---

---

---

---

---

---

3. Use the map of the River Severn to describe the location of Shrewsbury. You need to add a distance (in km) and a direction to each sentence.

a) Shrewsbury is \_\_\_\_\_ km to the \_\_\_\_\_ of Newtown.

b) Shrewsbury is \_\_\_\_\_ km to the \_\_\_\_\_ of Welshpool.

c) Shrewsbury is \_\_\_\_\_ km to the \_\_\_\_\_ of Telford.