

## 5. The Shrewsbury floods – November and December 2000

Towards the end of 2000, Shrewsbury was badly affected by flooding. On 1 November, the River Severn rose to a level of 5.25 metres at the Welsh Bridge. This was the highest river level since the floods of 1946. The streets around Frankwell (close to the Welsh Bridge) and around Longden Coleham (which is close to the English Bridge) were flooded. The Riverside and Pride Hill shopping centres were evacuated and closed.

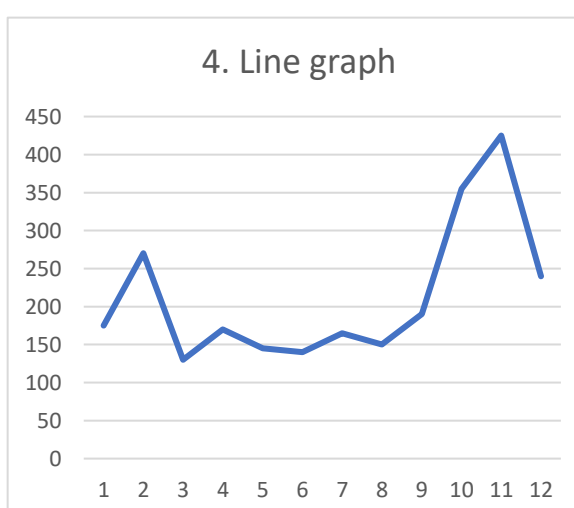
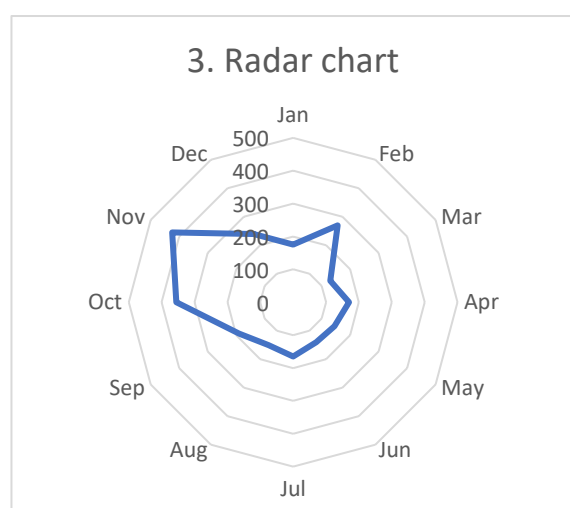
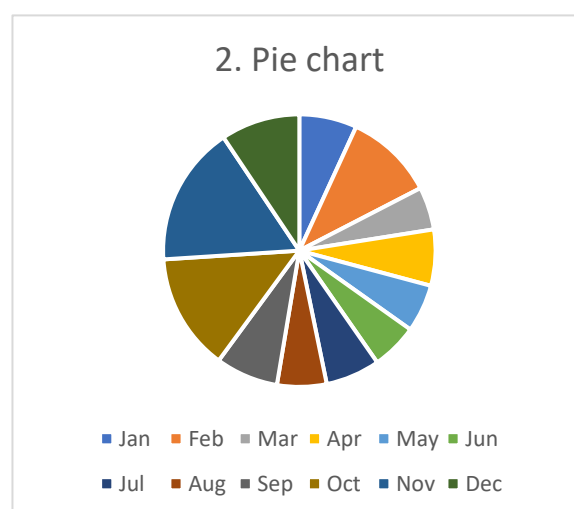
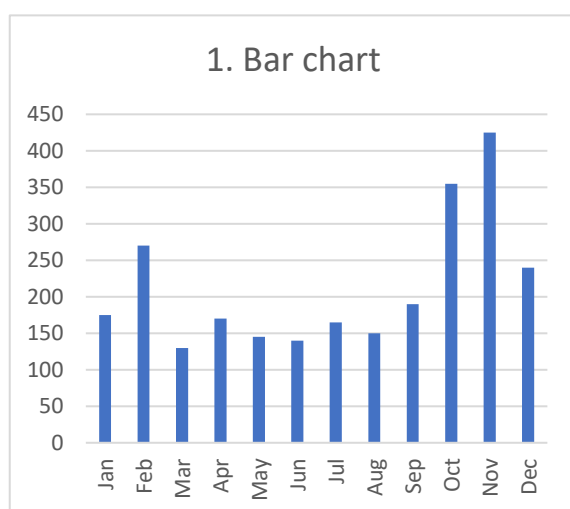
Shrewsbury was flooded again on 12 December 2000. This time the river peaked at 4.78 metres.

The table below records the rainfall (in mm) that fell during the year 2000. The first row shows monthly rainfall at Cwmystwyth, a weather station close to Plynlimon which is the source of the River Severn. The second row shows monthly rainfall at Shawbury, a weather station close to Shrewsbury.

	Jan	Feb	Mar	Apr	May	Jun	Jul	Aug	Sep	Oct	Nov	Dec
<b>Cwmystwyth</b>	175	270	130	170	145	140	165	150	190	355	425	240
<b>Shawbury</b>	25	55	15	115	45	45	65	90	100	115	110	75

### Activities

- A student copied the data for Cwmystwyth into a spreadsheet and made four graphs.
  - Choose the graph which is most suitable for this data. Explain why you chose it.
  - What is the main limitation of graph 2?
  - Study graph 1. How should it be amended to improve the way that it represents the data?



## The Shrewsbury floods – November and December 2000 (continued)

2. Use the data in the table to draw a pair of bar charts. Make sure that the scale for the vertical axis is the same on each graph so you can easily compare the two graphs.
3. Describe the pattern of rainfall at Shawbury during 2000.
4. Use the data from Cwmystwyth to explain why the flooding in Shrewsbury was so bad on 1 November.