

Sheila Jones legacy fund



Sheila Jones was an inspirational geography teacher who had a lifetime of involvement with the GA. She was the first female teacher to be elected GA President in 1975. She was also a member of the GA Bristol Branch and became the National Branch Officer.

The GA is very grateful to the estate of Sheila Jones for a legacy donation of £10,000. She was a great advocate of networking and so this donation will be divided into 100 packages of £100 each to support and develop networks through the GA.

- To claim a package, check your network meets the criteria of a 'GA network' and complete the online form to register your event on the networking calendar: <https://www.geography.org.uk/Resources/GA-Networking-Calendar>

- The first 100 eligible network events that are received through the form and take place after 1 September, 2022 will be able to claim a legacy package. Those networks that submit multiple events will be able to claim up to a maximum of £300.
- You'll be asked to share a PowerPoint slide at your network event which celebrates Sheila's contribution to the geography education community, and to complete a case study template which describes how you supported, rejuvenated or developed a GA network with the funding.

If you have any questions, please contact Julie Beattie, GA Administrator (jbeattie@geography.org.uk).

Post-16 and HE Phase Committee

This year we are focusing on collaboration between universities and schools/colleges, for example, by seeing how teachers can best support students with literacy to bridge the gap between A levels and undergraduate study. If you are interested in student transitions between school and university, or you would like to be a member of the Post-16 and HE Phase Committee, then please email Laura-Jayne Ward and Ellie Barker, Chairs of the committee at: Post16Geography@gmail.com. Or find us on Twitter: @GeogPost16HE. We look forward to hearing from you!

People



Alastair Owens, GA President 2022–23

Alastair Owens became GA President on 1 September 2022. He is currently Professor of Historical Geography at Queen Mary University of

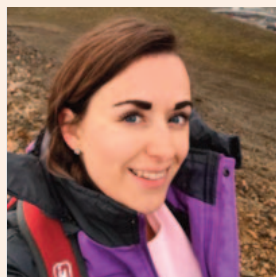
London and teaches a range of human geography topics at all levels, including a specialist third year module on Victorian London. He has recently completed a term as Head of Geography.

Alastair researches and writes about the historical geographies of Britain since 1800 and over his career has won over £2 million in research funding to support a range of projects. Much of his own research has involved collaboration with non-academic partners, particularly museums and community

organisations. This has resulted in wide-ranging outputs, including exhibitions, walking tours, TV and radio programmes, films and learning resources for schools. Alastair is also a Trustee at the Ragged School Museum in East London and Senior Vice Chair of the Corporation at Sir George Monoux Sixth Form College in Walthamstow.

Alastair has worked with the GA for a number of years, including involvement in the reform of the A level geography qualification, where he was associated with developing the 'changing places' theme. He co-authored the GA's *Top Spec Geography: Changing Places* with Simon Oakes and Emma Rawlings-Smith. He also works with the PTI (Prince's Teaching Institute), contributing to development programmes for newly-qualified geography teachers.

Follow Alastair on Twitter via @AlastairHackney.



Featuring Fiona Old Head of Geography at Kingsthorpe College.

How long have you been a member of the GA?

I have been a member of the GA since my NQT year and have encouraged the schools I have worked for to sign up for membership as I have always found the GA content so useful.

Which GA programmes and activities have you taken part in?

Last year I participated in the online TeachMeet for the online GA conference, which was very exciting and definitely gave me the 'bug'. The online platform gave me the confidence to share my voice with others. This year I presented live at the Conference at a teacher-to-teacher session about local fieldwork, and I hope to be able to present again at Conferences in the future. We hope to participate in the GA Quality Mark in 2023 and I am currently writing an article for the *GA Magazine* on local fieldwork.

continued on page 5

What is a typical work day like for you?

Every day is very different! I teach years 7-13 so one minute I could be teaching the structure of the Earth to year 7 and the next planning lessons on Global Governance for year 13. I try to pop into other lessons as much as possible to watch the brilliant teaching and learning across our department and there is always something fantastic going on – I love to catch those lightbulb moments. My day might also consist of leadership tasks such as curriculum planning, data analysis or meetings with the other subject leads in our faculty. After school we have revision classes and clubs which are always well attended by students.

Who has been the most influential person in your career?

My A level geography teacher, Anna Bass. At the time of doing my A levels teaching was not a career that I had thought about (and didn't until I was 24!) but Anna really inspired my love of geography. She had so much life experience and had done so many amazing things; I loved her stories, and she would do anything to help us. She had a wonderful way of explaining concepts and nothing seemed to get the better of her. She will totally blush when she reads this, but she did really inspire me and now when I'm not sure what to do or how to approach something I think 'Be more Anna'.

What else do you find inspiring?

Definitely the geography teacher community on Twitter. I look at what other schools are doing and think, Wow! For example, Alistair Hamill and his work on GIS is just incredible and it has really inspired me to embed more of this into what we do.

Where is your favourite place?

I don't think I can narrow it down! Firstly Walton-on-the-Naze is my happy place. Typical British seaside town but it always evokes childhood memories for me of my dad taking us to the beach and playing on the pier. Longyearbyen in Svalbard is also an incredibly special place. It was the first place I had ever travelled to on my own and it is just the most spectacular location. I hope one day to go back and experience more of the amazing wildlife and glacial views.

What part of your GA membership do you value the most?

The professional community is amazing. I love the GA Conferences and the chance to meet new people and hear about the work they are doing in their schools. I think we are an incredibly fortunate community to have resources such as the GA to aid our professional development.

GA staff appointments



Dan Whittall has joined the GA staff as Research Engagement Lead, working alongside Chris Winter. He will work part time on implementing key aspects of the GA's strategy which focus on geography education research and continue to work at Trinity Sixth Form Academy, Halifax.



The North Staffordshire Branch of the GA reports the death of **Sister Mary Henry** OP FRGS, MA (1929–2022), one of our long-standing members. As a young woman she enrolled

as a sister in the Dominican Order. The Dominicans emphasise learning and charity. Sister Mary embraced this vocation with outstanding educational service.

Sister Mary was well-liked by her students. She would lead groups of students on geography

fieldtrips and religious retreats. Visiting other Dominican Convents gave her more opportunities to indulge in her love of geography whether it was Dartmoor geomorphology whilst visiting Torquay or glacial features in Norway.

Sister Mary actively supported the branch for 62 years. The branch was re-established in 1960 and she was one of its first members. She was elected to the committee in 1969 and eventually became President of the branch from 1986 until 2013. She was also elected as a Fellow of the RGS in October 1960. She attended many GA Annual Conferences.

Bob Jones, Hon Secretary, North Staffordshire Branch



Dr Clare Lukehurst, who has died aged 87, was one of the UK's leading experts on anaerobic digestion. She played a key role in the establishment and development of the UK's biogas industry.

Clare completed a degree in geography at the University of Exeter (at that time the University College of the South-West) and taught geography, working first at the Bishop Thomas Grant School in Streatham, London, and later at Brighton

Polytechnic (now the University of Brighton), where she was Principal Lecturer in Geography and Director of the Countryside Research Unit in Brighton, a project which looked at changing land use in Sussex. She published widely on the geography and agriculture of south-east England, and began a lifelong effort to promote the importance of geography and geographical knowledge.

Clare was an active supporter of the Isle of Thanet Branch of the GA, including through its outreach to local geography teachers and students.

Dr Philippa Berry

WelshWise

There was a welcome return of the WelshWise Quiz in June/July 2022 with regional competitions held in Cardiff, North Wales, and in Mid Wales. Organised by the GA's Welsh Special Interest group, all the questions are about the geography of Wales. The quiz aims to encourage Year 8 and 9 Welsh pupils to celebrate all aspects of their geography and to value the importance of the subject. There were 21 teams and 63 pupils involved. The North Wales winners were Ysgol Friars in Bangor. The South Wales winners were Ysgol Bryngwyn School in Llanelli. Brecon High School were the Mid Wales winners. Congratulations to the winning teams and many thanks to our hosts.